

Designed exclusively for plumbing professionals, the John Wood® line of residential electric water heaters provides optimum reliability, performance and energy efficiency. With unique features and a broad range of models and sizes, there is a John Wood product to suit any application.

Features

Energy Savings

- Meets and exceeds NRCan energy efficiency standards
- Wide variety of models available to meet energy efficiency compliance standards nationwide
- Styropour® base for added energy efficiency

Designed for Performance

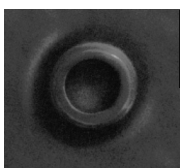
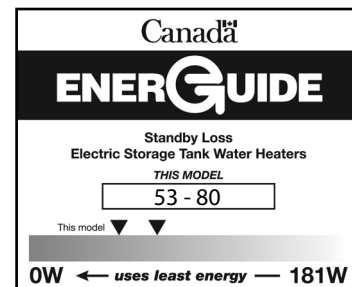
- Factory-installed plastic-lined heat trap nipples
- Exclusive TankSaver® design to prolong tank life
- Glass lined tank provides superior protection against corrosion
- Thermostatically controlled, long life elements
- Brass drain valve
- Quick recovery models available, suitable for the builder market
- CFC-free foam insulation

Serviceability

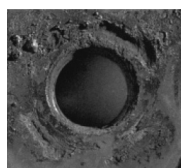
- Conveniently located T&P and drain valve for ease of installation and serviceability
- Removable anode

Exclusive Design

- The exclusive TankSaver design aids the glass lining process to ensure optimum coverage, and guards tank openings for watertight connections



With
TankSaver



Without
TankSaver



WARRANTY

8 Year Limited Tank Warranty

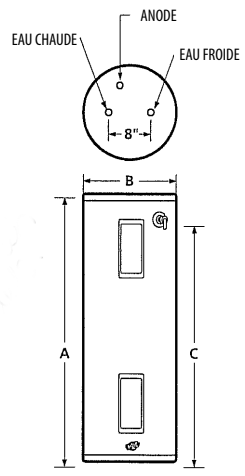
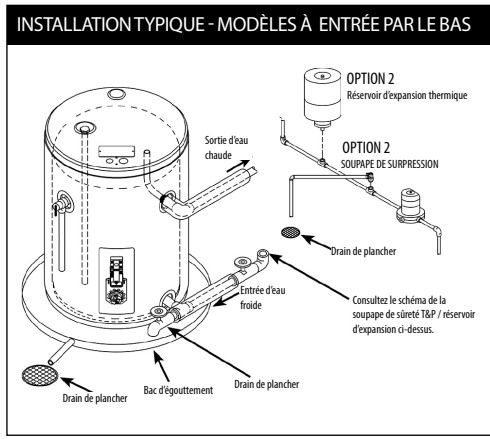
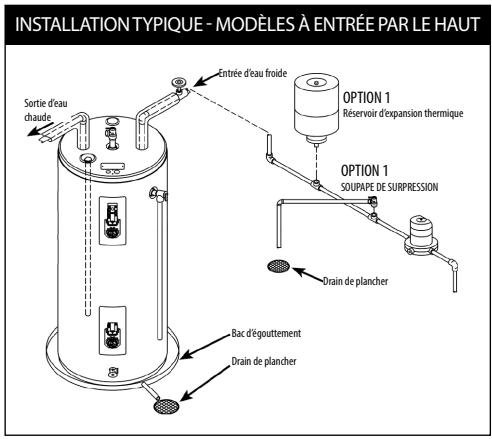
6 Year Limited Parts Warranty

Consult installation manual for terms and conditions or visit www.johnwoodwaterheaters.com for more information.



SPECIFICATIONS

Model	Series	Capacity			Elements (Upper and Lower)		Standby Loss	First Hour Rating	Height to Top of Tank A	Diameter B	Shipping Weight	BC/ON Compliant
		IG	USG	LITRES	WATTS	VOLTS						
TOP ENTRY												
JW850SDE-30X	250	40	50	182	3000	208	53	60 (227)	48¾ (124)	22 (56)	125 (57)	√
JW850SDE-30	250	40	50	182	3000	240	53	60 (227)	48¾ (124)	22 (56)	125 (57)	√
JW850SDE1-30X	260	40	50	182	3000	208	69	60 (227)	48 (122)	21½ (55)	121 (55)	-
JW850SDE1-30	260	40	50	182	3000	240	69	60 (227)	48 (122)	21½ (55)	121 (55)	-
JW850SDE-45X	250	40	50	182	4500	208	53	60 (227)	48¾ (124)	22 (56)	125 (57)	√
JW850SDE-45	250	40	50	182	4500	240	53	60 (227)	48¾ (124)	22 (56)	125 (57)	√
JW850SDE1-45X	260	40	50	182	4500	208	69	60 (227)	48 (122)	21½ (55)	121 (55)	-
JW850SDE1-45	260	40	50	182	4500	240	69	60 (227)	48 (122)	21½ (55)	121 (55)	-
JW850SDE-55X	250	40	50	182	5500	208	53	60 (227)	48¾ (124)	22 (56)	125 (57)	√
JW850SDE-60	250	40	50	182	6000	240	53	60 (227)	48¾ (124)	22 (56)	125 (57)	√
JW850SDE1-55X	260	40	50	182	5500	208	69	60 (227)	48 (122)	21½ (55)	121 (55)	-
JW850SDE1-60	260	40	50	182	6000	240	69	60 (227)	48 (122)	21½ (55)	121 (55)	-
JW880TDE-30X	250	60	80	287	3000	208	78	81 (307)	60½ (154)	24 (61)	170 (77)	√
JW880TDE-30	250	60	80	287	3000	240	78	81 (307)	60½ (154)	24 (61)	170 (77)	√
JW880TDE-45X	250	60	80	287	4500	208	78	81 (307)	60½ (154)	24 (61)	170 (77)	√
JW880TDE-45	250	60	80	287	4500	240	78	81 (307)	60½ (154)	24 (61)	170 (77)	√
JW880TDE-55X	250	60	80	287	5500	208	78	81 (307)	60½ (154)	24 (61)	170 (77)	√
JW880TDE-60	250	60	80	287	6000	240	78	81 (307)	60½ (154)	24 (61)	170 (77)	√
TOP ENTRY, INCOLOY ELEMENT												
JW850SDE1-38	260	40	50	182	3800	240	69	60 (227)	48 (122)	21½ (55)	121 (55)	-
JW850SDE-38	250	40	50	182	3800	240	53	60 (227)	48¾ (124)	22 (56)	125 (57)	√
JW880TDE-38	250	60	80	287	3800	240	78	81 (307)	60½ (154)	24 (61)	170 (77)	√
BOTTOM ENTRY												
JW850SDEB-30X	250	40	50	182	3000	208	65	60 (227)	48 (122)	22 (56)	122 (55)	√
JW850SDEB-30	250	40	50	182	3000	240	65	60 (227)	48 (122)	22 (56)	122 (55)	√
JW850SDEB-45X	250	40	50	182	4500	208	65	60 (227)	48 (122)	22 (56)	122 (55)	√
JW850SDEB-45	250	40	50	182	4500	240	65	60 (227)	48 (122)	22 (56)	122 (55)	√
JW880TDEB-30X	250	60	80	287	3000	208	80	81 (307)	60½ (154)	24 (61)	170 (77)	√
JW880TDEB-30	250	60	80	287	3000	240	80	81 (307)	60½ (154)	24 (61)	170 (77)	√
JW880TDEB-45X	250	60	80	287	4500	208	80	81 (307)	60½ (154)	24 (61)	170 (77)	√
JW880TDEB-45	250	60	80	287	4500	240	80	81 (307)	60½ (154)	24 (61)	170 (77)	√



All John Wood electric water heaters listed on this spec sheet have a maximum temperature setting of 150°F.