

## ProLine<sup>®</sup> & ProLine<sup>®</sup> Master Electric

### Features

#### Energy Savings

- Meets and exceeds NRCAN energy efficiency standards
- Styropour<sup>®</sup> base for added energy efficiency

#### Designed for Performance

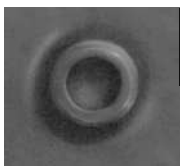
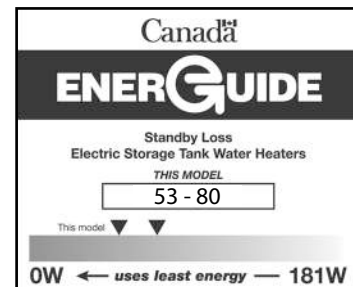
- ProLine<sup>®</sup> and ProLine<sup>®</sup> Master models are residential water heaters with commercial-grade quality
- Factory-installed plastic-lined heat trap nipples
- Exclusive TankSaver<sup>®</sup> design to prolong tank life
- Glass lining provides superior protection against tank corrosion
- Thermostatically controlled, long life elements
- Brass drain valve
- CFC-free foam insulation

#### Serviceability

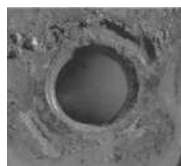
- Conveniently located T&P and drain valve for ease of installation and serviceability
- Top-mounted heavy duty anode rod for added tank protection

#### Exclusive Design

- The exclusive TankSaver<sup>®</sup> design aids the glass lining process to ensure optimum coverage, and guards tank openings for watertight connections



With  
TankSaver<sup>®</sup>



Without  
TankSaver<sup>®</sup>

### WARRANTY

6 year limited tank and parts on ProLine<sup>®</sup> models  
8 year limited tank and parts on ProLine<sup>®</sup> Master models  
2 or 4 year tank warranty extension kits are available  
for 6 year models



### SPECIFICATIONS

Model	Series	Capacity			Elements (Upper and Lower)		Standby Loss WATTS	Energy Factor	First Hour Rating GPH (LPH)	Height to Top of Tank A IN (CM)	Diameter B IN (CM)	Shipping Weight LB (KG)	Warranty Tank/Parts Years	BC/ON/QC Compliant
		IG	USG	LITRES	WATTS	VOLTS								
<b>TOP ENTRY</b>														
E50TE-30208	250	40	50	182	3000	208	53	0.92	60 (227)	48 ¾ (124)	22 (56)	125 (57)	6/6	✓
E50TE-30240	250	40	50	182	3000 <sup>+</sup>	240	53	0.92	60 (227)	48 ¾ (124)	22 (56)	125 (57)	6/6	✓
E50TE-38240	250	40	50	182	3800 <sup>++</sup>	240	53	0.92	60 (227)	48 ¾ (124)	22 (56)	125 (57)	6/6	✓
E50TE-45208	250	40	50	182	4500	208	53	0.92	60 (227)	48 ¾ (124)	22 (56)	125 (57)	6/6	✓
E50TE-45240	250	40	50	182	4500 <sup>+++</sup>	240	53	0.92	60 (227)	48 ¾ (124)	22 (56)	125 (57)	6/6	✓
E50TE-55208	250	40	50	182	5500	208	53	0.92	60 (227)	48 ¾ (124)	22 (56)	125 (57)	6/6	✓
E50TE-60240	250	40	50	182	6000 <sup>++++</sup>	240	53	0.92	60 (227)	48 ¾ (124)	22 (56)	125 (57)	6/6	✓
E66TE-38240	275	50	66	250	3800 <sup>++</sup>	240	79	0.88	72 (272)	60 ¼ (153)	22 (56)	146 (66)	6/6	
E66TE-45208	275	50	66	250	4500	208	79	0.88	72 (272)	60 ¼ (153)	22 (56)	146 (66)	6/6	
E66TE-45240	275	50	66	250	4500 <sup>+++</sup>	240	79	0.88	72 (272)	60 ¼ (153)	22 (56)	146 (66)	6/6	
E80TE-30208	250	60	80	287	3000	208	78	0.90	81 (307)	60 ½ (154)	24 (61)	170 (77)	6/6	✓
E80TE-30240	250	60	80	287	3000 <sup>+</sup>	240	78	0.90	81 (307)	60 ½ (154)	24 (61)	170 (77)	6/6	✓
E80TE-38240	250	60	80	287	3800 <sup>++</sup>	240	78	0.90	60 (227)	60 ½ (154)	24 (61)	170 (77)	6/6	✓
E80TE-45208	250	60	80	287	4500	208	78	0.90	60 (227)	60 ½ (154)	24 (61)	170 (77)	6/6	✓
E80TE-45240	250	60	80	287	4500 <sup>+++</sup>	240	78	0.90	81 (307)	60 ½ (154)	24 (61)	170 (77)	6/6	✓
E80TE-55208	250	60	80	287	5500	208	78	0.90	81 (307)	60 ½ (154)	24 (61)	170 (77)	6/6	✓
E80TE-60240	250	60	80	287	6000 <sup>++++</sup>	240	78	0.90	81 (307)	60 ½ (154)	24 (61)	170 (77)	6/6	✓
<b>TOP ENTRY</b>														
E50TEM-30240*	250	40	50	182	3000 <sup>+</sup>	240	53	0.92	60 (227)	48 (122)	22 (56)	122 (55)	8/8	✓
E50TEM-38240*	250	40	50	182	3800 <sup>++</sup>	240	53	0.92	60 (227)	48 (122)	22 (56)	122 (55)	8/8	✓
E80TEM-45240*	250	60	80	287	4500 <sup>+++</sup>	240	78	0.90	81 (307)	60½ (154)	24 (61)	170 (77)	8/8	✓
<b>BOTTOM ENTRY</b>														
E50BE-30208	250	40	50	182	3000	208	65	0.91	60 (227)	48 (122)	22 (56)	122 (55)	6/6	✓
E50BE-30240	250	40	50	182	3000 <sup>+</sup>	240	65	0.91	60 (227)	48 (122)	22 (56)	122 (55)	6/6	✓
E50BE-45208	250	40	50	182	4500	208	65	0.91	60 (227)	48 (122)	22 (56)	122 (55)	6/6	✓
E50BE-45240	250	40	50	182	4500 <sup>+++</sup>	240	65	0.91	60 (227)	48 (122)	22 (56)	122 (55)	6/6	✓
E80BE-30208	250	60	80	287	3000	208	80	0.90	81 (307)	60½ (154)	24 (61)	170 (77)	6/6	✓
E80BE-30240	250	60	80	287	3000 <sup>+</sup>	240	80	0.90	81 (307)	60½ (154)	24 (61)	170 (77)	6/6	✓
E80BE-45208	250	60	80	287	4500	208	80	0.90	81 (307)	60½ (154)	24 (61)	170 (77)	6/6	✓
E80BE-45240	250	60	80	287	4500 <sup>+++</sup>	240	80	0.90	81 (307)	60½ (154)	24 (61)	170 (77)	6/6	✓

\* Model has incoloy elements

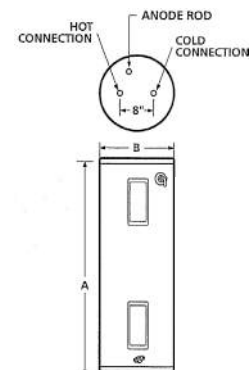
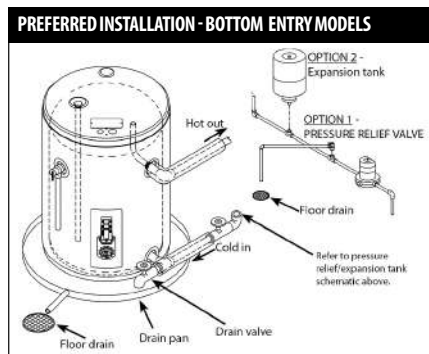
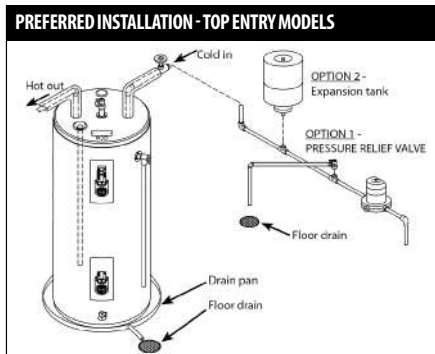
All models comply with national energy efficiency regulations.

\*Model is dual-rated. At 208V wattage is 2253.

\*\*Model is dual-rated. At 208V wattage is 2854.

\*\*\*Model is dual-rated. At 208V wattage is 3380.

\*\*\*\*Model is dual-rated. At 208V wattage is 4507.



All John Wood electric water heaters listed on this spec sheet have a maximum temperature setting of 150°F.

For Technical Information/Warranty:  
Call 1-888-479-8324 or email [techsupport@johnwoodwaterheaters.com](mailto:techsupport@johnwoodwaterheaters.com)  
[www.johnwoodwaterheaters.com](http://www.johnwoodwaterheaters.com)