



Space Saver® Electric Water Heaters

Featuring a variety of models designed for installations in cottages, offices, mobile homes or other applications where space is limited, the Space Saver® line of residential electric water heaters provides optimum reliability, performance and energy efficiency.

DESIGNED FOR PERFORMANCE

- Exclusive TankSaver® design
- Glass-lined tanks for longer life
- Meets latest energy efficiency standards
- Factory-installed plastic-lined nipples
- Patented Styropour® base for added energy efficiency
- Thermostatically controlled long life elements
- CFC-free foam insulation
- Personnel protector covers elements and controls

EASY TO INSTALL AND REPAIR

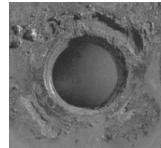
- Conveniently located T&P and drain valve
- Removable anodes

WARRANTY*

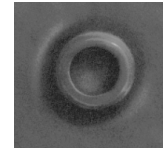
- 6 year limited tank warranty (5 years for model SS025SE15)
- 1 year limited parts warranty

EXCLUSIVE DESIGN

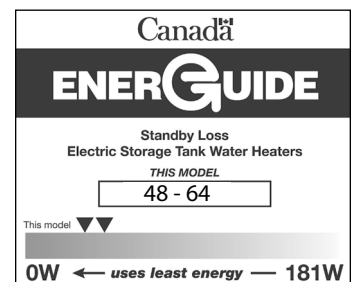
- The exclusive TankSaver design aids the glass lining process to ensure optimum coverage, and guards tank openings for watertight connections



Without TankSaver



With TankSaver



*In residential applications. Reduced warranty in commercial applications.



Space Saver® Electric Water Heaters

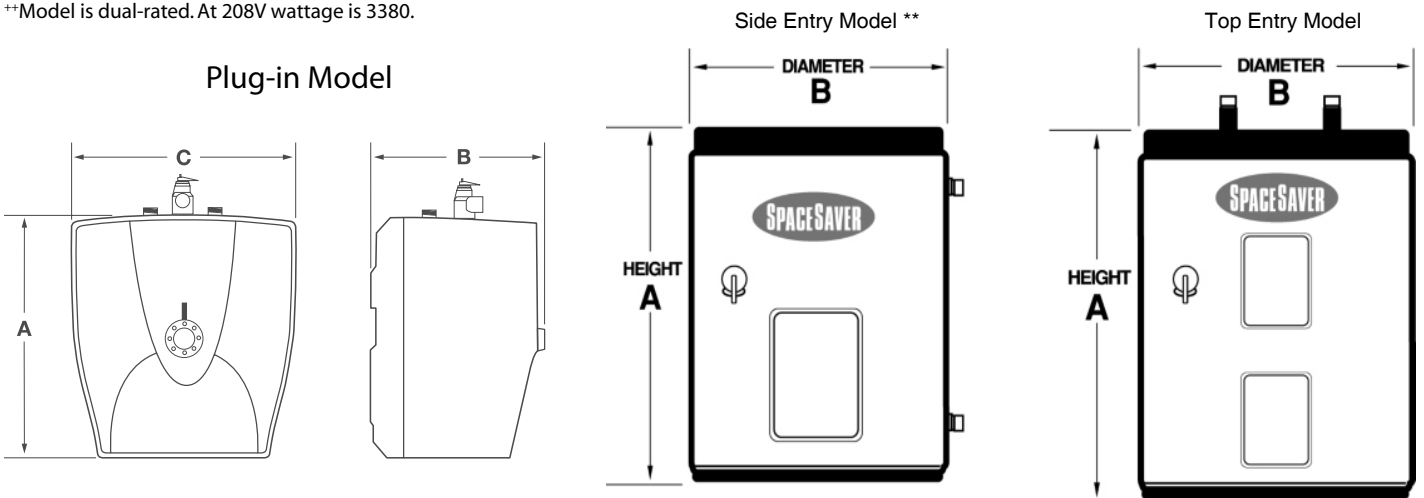
SPECIFICATIONS

Model	Series	Capacity			Input		Recovery Rate at 90°F Temperature Rise	Standby Loss	Height	Diameter*		Width	Shipping Weight	BC/ON Compliant
		IG	USG	L	WATTS	VOLTS	GPH (LPH)	WATTS	A IN (CM)	B IN (CM)	C IN (CM)	LB (KG)		
PLUG IN SINGLE ELEMENT MODEL														
SS025SE15	N/A	2	2.5	10	1500	120	7 (26)	N/A	14 (36)	11 (28)	14 (36)	20 (9)	√	
BOTTOM ENTRY SINGLE ELEMENT MODELS														
SS06SEB15	N/A	5	6	23	1500	120	7 (26)	N/A	15 ¼ (39)	14 ¼ (36)	N/A	35 (16)	√	
SS06SEB30	N/A	5	6	23	3000+	240	14 (53)	N/A	15 ¼ (39)	14 ¼ (36)	N/A	35 (16)	√	
SS12SEB15	N/A	9	12	43	1500	120	7 (26)	N/A	22 ¾ (58)	16 (41)	N/A	55 (25)	√	
SS12SEB30	N/A	9	12	43	3000+	240	14 (53)	N/A	22 ¾ (58)	16 (41)	N/A	55 (25)	√	
SS620SSEB-15K	100	14	19	65	1500	120	7 (26)	51	25 ½ (65)	20 (51)	N/A	65 (30)	√	
SS620SSEB-30	100	14	19	65	3000+	240	14 (53)	51	25 ½ (65)	20 (51)	N/A	65 (30)	√	
SS630SSEBN-15K	100	22	30	108	1500	120	7 (26)	48	30 (76)	22 (56)	N/A	101 (46)	√	
SS630SSEBN-30	100	22	30	108	3000+	240	14 (53)	48	30 (76)	22 (56)	N/A	101 (46)	√	
TOP ENTRY DOUBLE ELEMENT MODELS														
SS640SDE3-15K	100	30	40	143	1500	120	7 (26)	54	50 (127)	22 (56)	N/A	103 (47)	√	
SS640SDE3-30X	100	30	40	143	3000	208	14 (53)	54	50 (127)	22 (56)	N/A	103 (47)	√	
SS640SDE3-30	100	30	40	143	3000+	240	14 (53)	54	50 (127)	22 (56)	N/A	103 (47)	√	
LOWBOY TOP ENTRY DOUBLE ELEMENT MODELS														
SS630LDE-45	250	22	30	108	4500**	240	20 (76)	53	31 (79)	22 (56)	N/A	96 (44)	ON only	
SS640LDE-45	250	30	40	143	4500**	240	20 (76)	62	33 ½ (85)	24 (61)	N/A	113 (51)	ON only	
SS650LDE-45	250	40	50	182	4500**	240	20 (76)	64	34 (86)	26 ½ (67)	N/A	164 (74)	-	

*Depth on model SS025SE15

*Model is dual-rated. At 208V wattage is 2253.

**Model is dual-rated. At 208V wattage is 3380.



**Note: 6, 12 and 19 USG models have side connections on left hand side.