



Space Saver® Electric Water Heaters

Designed for installations in cottages, offices, mobile homes or other applications where space is limited, the Space Saver® line of residential electric water heaters provides optimum reliability, performance and energy efficiency. With special features and a broad range of models and sizes, there is a GSW product to suit any application.

DESIGNED FOR PERFORMANCE

- Exclusive TankSaver® design
- Glass-lined tanks for longer life
- Meets latest energy efficiency standards
- Factory-installed plastic-lined nipples
- Patented Styropour® base for added energy efficiency
- Thermostatically controlled long life elements
- CFC-free foam insulation
- Personnel protector covers elements and controls

EASY TO INSTALL AND REPAIR

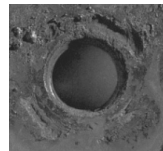
- Conveniently located T&P and drain valve
- Removable anodes

LIMITED TANK AND PARTS WARRANTY

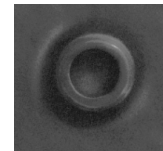
Consult written warranty on the back of this sheet, with documentation included with water heater or contact GSW for complete warranty information.

EXCLUSIVE DESIGN

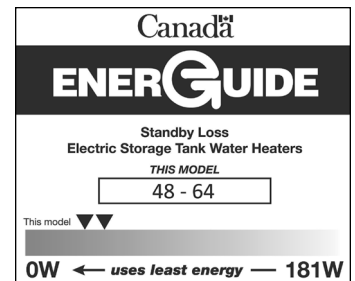
The exclusive TankSaver design works to prolong tank life. TankSaver impedes corrosion by guarding metal tank openings from exposure and keeping them watertight. The durable construction virtually eliminates rust.



Without TankSaver



With TankSaver



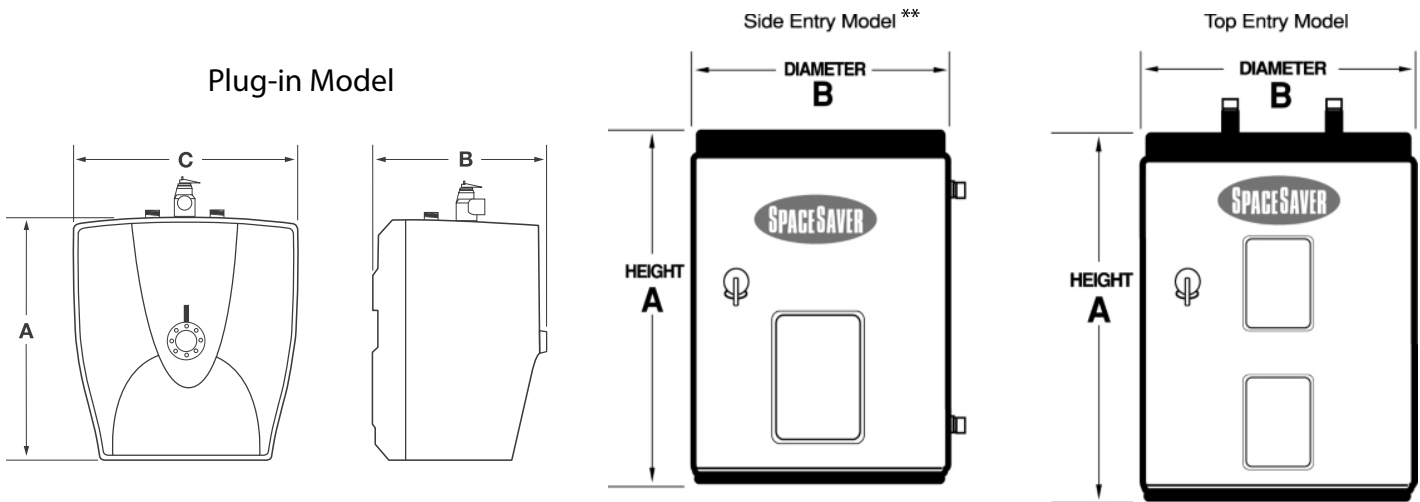


Space Saver[®] Electric Water Heaters

SPECIFICATIONS

| Tank Warranty | Model | Capacity | | | Standby Loss | Elements | | Dimensions | | | Shipping Weight | BC Compliant |
|---|---------------|----------|-----|--------|--------------|----------|-------|------------|-----------|---------|-----------------|--------------|
| | | IG | USG | LITRES | | WATTS | WATTS | VOLTS | A | B | | |
| In Years** | | | | | WATTS | WATTS | VOLTS | IN (CM) | IN (CM) | IN (CM) | LBS (KG) | |
| PLUG-IN SINGLE ELEMENT MODEL | | | | | | | | | | | | |
| 5 | SS025SE15 | 2 | 2.5 | 10 | N/A | 1500 | 120 | 14 (36) | 11 (28) | 14 (36) | 20 (9) | √ |
| SIDE ENTRY SINGLE ELEMENT MODELS | | | | | | | | | | | | |
| 6 | SS06SEB15 | 5 | 6 | 23 | N/A | 1500 | 120 | 15 ¼ (39) | 14 ¼ (36) | N/A | 35 (16) | √ |
| 6 | SS06SEB30 | | | | | 3000 | 240 | | | | | |
| 6 | SS12SEB15 | 9 | 12 | 43 | N/A | 1500 | 120 | 22 ¾ (58) | 16 (41) | N/A | 55 (25) | √ |
| 6 | SS12SEB30 | | | | | 3000 | 240 | | | | | |
| 6 | SS620SSEB-15K | 14 | 19 | 65 | 51 | 1500 | 120 | 25 ½ (65) | 19 (48) | N/A | 65 (30) | √ |
| 6 | SS620SSEB-30 | | | | | 3000 | 240 | | | | | |
| 6 | SS630SSEB-15K | 22 | 30 | 108 | 48 | 1500 | 120 | 30 (76) | 22 (56) | N/A | 90 (41) | √ |
| 6 | SS630SSEB-30 | | | | | 3000 | 240 | | | | | |
| TOP ENTRY DOUBLE ELEMENT MODELS | | | | | | | | | | | | |
| 6 | SS640SDE-15K | 30 | 40 | 143 | 54 | 1500 | 120 | 48 (122) | 20 (51) | N/A | 110 (50) | √ |
| 6 | SS640SDE-30X | | | | | 3000 | 208 | | | | | |
| 6 | SS640SDE-30 | | | | | 3000 | 240 | | | | | |
| LOWBOY TOP ENTRY DOUBLE ELEMENT MODELS | | | | | | | | | | | | |
| 6 | SS630LDE-45 | 22 | 30 | 108 | 53 | 4500 | 240 | 31 (79) | 22 (56) | N/A | 98 (44) | - |
| 6 | SS640LDE-45 | 30 | 40 | 182 | 62 | 4500 | 240 | 33 ½ (82) | 24 (61) | N/A | 126 (57) | - |
| 6 | SS650LDE-45 | 40 | 50 | 182 | 64 | 4500 | 240 | 34 (84) | 26 ½ (66) | N/A | 162 (73) | - |

**In Residential applications. Reduced warranty in Commercial applications. Parts warranted for 1 year.



**Note: 6, 12 and 19 USG models have side connections on left hand side.